

CÁT TIẾNG CA XƯƠNG

Nhạc: _____

Lời: _____

Hòa âm: David Dong 2013.
Viết cho Phê mê Band.

Intro. (Solo Drums). (snare)

♩ = 138 (Low tom)

Drum 2. (kick.)

Drum 2. (#floor tom)

(Israel Horn).

Bass.

(Simile Drums).

(2 times).

(Solo Fuzz Guitar)

Guitar. F_m A F_m $F_m/c\#$ C

Bass.

Drums.

Detailed description of the musical score: The score is written on ten staves. The first two staves are for two different drum parts, labeled 'Drum 2. (kick.)' and 'Drum 2. (#floor tom)'. The third staff is for 'Israel Horn' in treble clef with a key signature of one sharp (F#). The fourth staff is for 'Bass.' in bass clef with a key signature of one sharp. The fifth staff is for '(Solo Fuzz Guitar)' in treble clef with a key signature of one sharp, including chord symbols F_m , A , F_m , $F_m/c\#$, and C . The sixth staff is for 'Bass.' in bass clef with a key signature of one sharp. The seventh staff is for 'Drums.' in bass clef with a key signature of one sharp. The score includes various musical notations such as notes, rests, and dynamic markings.

Nhạc: _____

Lời: _____

Em G A Em

Em A Em Em/c c Em G

A B4

(A1)

Em | Bm7 Em | Em | Am7 Em

Guitar.

G | D Em | c Bm7 | Em

(A2) Em (Fuzz Guit), Bm7 Em Em7

Am7 Em G D Em c Bm7

(A3) Fuzz Ground.

Em7

Em | Bm7 Em | Em | Am Em

G | D Em | c Bm7 | Em

A Dance che.

Nhạc: _____

Lời: _____

Fuzz leads.

Fuzz ground.

(Charleston)

Guitar Em7

A5 Tutti

Bass

allegro.

Interlude:

(Solo Drums)

(Solo Slap Bass).

(trando)

(Solo Violon)

Nhạc:

Lời:

Bm7

Handwritten musical notation on a bass clef staff. It features a key signature of one sharp (F#) and a common time signature (C). The notation includes several chords and melodic lines. A circled '3' is written above the staff.

Handwritten musical notation on a treble clef staff. It features a key signature of one sharp (F#) and a common time signature (C). The notation includes chords and melodic lines. A circled '4' is written above the staff, and the text "(Puzz Solo)" is written to the right.

Handwritten musical notation on a treble clef staff. It features a key signature of one sharp (F#) and a common time signature (C). The notation includes chords and melodic lines. A circled '5' is written above the staff, and the text "(Violon)" and "Bm7" are written above the staff. Below the staff, the text "Violon + Guitar" is written.

Handwritten musical notation on a treble clef staff. It features a key signature of one sharp (F#) and a common time signature (C). The notation includes chords and melodic lines. A circled '2' is written above the staff.

Handwritten musical notation on a treble clef staff. It features a key signature of two flats (Bb) and a common time signature (C). The notation includes chords and melodic lines. A circled '3' and a circled 'B1' are written above the staff, with the text "(Cứn chun Tui, vi)" written to the right.

Tutti:

Handwritten musical notation on a treble clef staff. It features a key signature of two flats (Bb) and a common time signature (C). The notation includes chords and melodic lines. A circled '4' is written above the staff. Below the staff, the text "(Rock) (Puzz Guitar)" and "Drums. T 2 9 F 2" is written.

Handwritten musical notation on a bass clef staff. It features a key signature of two flats (Bb) and a common time signature (C). The notation includes chords and melodic lines. A circled '5' is written above the staff. Below the staff, the text "Bass" is written.

Handwritten musical notation on a treble clef staff. It features a key signature of two flats (Bb) and a common time signature (C). The notation includes chords and melodic lines. A circled '6' is written above the staff.

Handwritten musical notation on a treble clef staff. It features a key signature of two flats (Bb) and a common time signature (C). The notation includes chords and melodic lines. A circled 'B2' is written above the staff.

Handwritten musical notation on a treble clef staff. It features a key signature of two flats (Bb) and a common time signature (C). The notation includes chords and melodic lines. A circled '7' is written above the staff.

B₃

(Guitar leads)

Nhạc: _____

Lời: _____

F F D₇

Interlude + lời chúng vô tay tay tae

(violin + guitar).
(snare).

Drums.

Bass

Coda.

claps:

Snare: pick

Coda.

David Dong 2013

Violon: Liên khúc Cát tiếng Ca Xứ

Nhạc:

Lời:

Viết soạn cho violon 1

David Dong 2013.

Intro.

Solo Drums

Solo Bass

A1

A2.

A3

A4

A5

allegro.

Interlude. (Solo Drums)

(Solo Violon)

Solo Bass,

Handwritten musical notation on a single staff. It begins with a treble clef and a key signature of one sharp (F#). The notation includes a double bar line with a '2' above it, followed by several measures of music with various note values and stems.

Handwritten musical notation on a single staff, continuing from the previous staff. It features a treble clef, a key signature of one sharp, and a series of notes with stems, ending with a double bar line.

Handwritten musical notation on a single staff. It starts with a treble clef and a key signature of one sharp. Above the staff, there are circled annotations: a 'B' in a circle, a square containing a crossed-out 'S', and a 'B2' in a circle. The notation includes a double bar line with a '7' above it, followed by several measures of music.

Handwritten musical notation on a single staff. It begins with a treble clef and a key signature of one sharp. The notation includes several measures of music with notes and stems, ending with a double bar line.

Handwritten musical notation on a single staff. It starts with a treble clef and a key signature of one sharp. Above the staff, there is a circled annotation 'B3' and a '7' in a box. The notation includes a double bar line with a '7' above it, followed by several measures of music.

Interlude.

Handwritten musical notation on a single staff. It begins with a treble clef and a key signature of one flat (Bb). The notation includes several measures of music with notes and stems, ending with a double bar line.

Handwritten musical notation on a single staff. It starts with a treble clef and a key signature of one flat. Above the staff, there is a circled annotation '2'. The notation includes a double bar line with a '2' above it, followed by several measures of music.

Fine

Handwritten musical notation on a single staff. It begins with a treble clef and a key signature of one flat. The notation includes several measures of music with notes and stems, ending with a double bar line.

Two empty musical staves with treble clefs, intended for further notation.

Two empty musical staves with treble clefs, intended for further notation.

Drums: Cát tiếng Ca Xươp

Viết cho Trúy: Dành Dông

$\text{♩} = 138$ (Solo Drums). (Snare).
(low tom).

Drum I, play 11 bars.

Drum II. (Floor tom). play 11 Bars

Solo Guitar.

A1 play 8 Bars | A2 play 8 Bars | A3 play 8 Bars

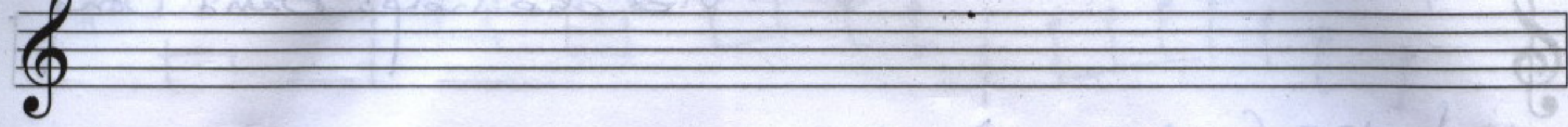
A4 Dải chũ. play 7 Bars

DM I. Snare play 7 Bars

DM II. (Floor tom). play 7 Bars

A5 Tutti

(atempo) Rock style. Intertude (Solo Drums) - 3 Bars



②

x 3 Bars

③

2 Bars | 2 Bars | 3 Bars

tutti

cầu chúa TRỊ VỊ

B₁

x 7 Bars

B₂ | B₃

play 8 Bars | play 7 Bars

Interlude.

x 3 Bars

x 3 Bars || B₁ | B₂ | B₃

x 3 Bar | x 2 Bars

Fine.

Fine.

②